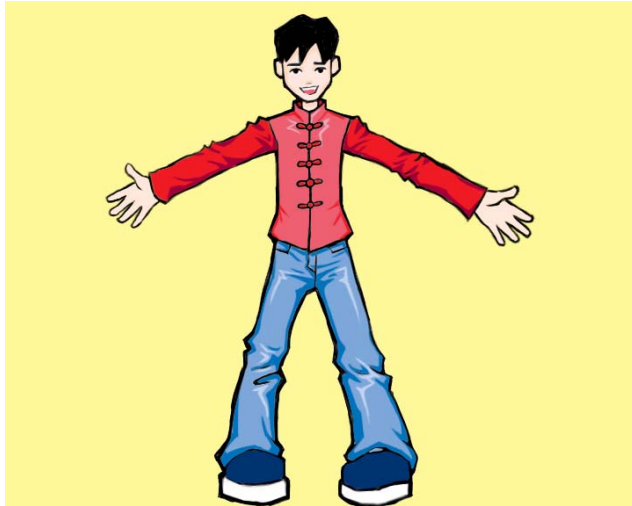


《第3课 时间》

(Lesson 3 Date and Time)

一. 意义引申。(Meaning Connotation) 大 (big)



“大”是一个正面站立人形的摹写，取“天大地大人也大”的意思，本来是大人（成年人）的意思，可以引申表示一般事物或抽象事物的“大”。

（“大” is shows the shape of a person standing facing the front, taking the meaning of “The sky and earth is huge and so are people. It originally has the meaning of adult and can represent the huge size of physical or abstract objects. ）

问题: (Question:)

“大”的反义词是什么? (What is the antonym of “大”)

二. 时间。(Time)

日 (day)

星期 (week)

月 (month)

年 (year)

1 2 3 4 5 6 7 8 9 10 11 12 13 14 15 16 17 18 19 20 21 22 23 24 25 26 27 28 29 30 31	1 2 3 4 5 6 7 8 9 10 11 12 13 14 15 16 17 18 19 20 21 22 23 24 25 26 27 28 29 30 31	1 2 3 4 5 6 7 8 9 10 11 12 13 14 15 16 17 18 19 20 21 22 23 24 25 26 27 28 29 30 31	1 2 3 4 5 6 7 8 9 10 11 12 13 14 15 16 17 18 19 20 21 22 23 24 25 26 27 28 29 30
1 2 3 4 5 6 7 8 9 10 11 12 13 14 15 16 17 18 19 20 21 22 23 24 25 26 27 28 29 30 31	1 2 3 4 5 6 7 8 9 10 11 12 13 14 15 16 17 18 19 20 21 22 23 24 25 26 27 28 29 30	1 2 3 4 5 6 7 8 9 10 11 12 13 14 15 16 17 18 19 20 21 22 23 24 25 26 27 28 29 30 31	1 2 3 4 5 6 7 8 9 10 11 12 13 14 15 16 17 18 19 20 21 22 23 24 25 26 27 28 29 30 31
1 2 3 4 5 6 7 8 9 10 11 12 13 14 15 16 17 18 19 20 21 22 23 24 25 26 27 28 29 30	1 2 3 4 5 6 7 8 9 10 11 12 13 14 15 16 17 18 19 20 21 22 23 24 25 26 27 28 29 30 31	1 2 3 4 5 6 7 8 9 10 11 12 13 14 15 16 17 18 19 20 21 22 23 24 25 26 27 28 29 30	1 2 3 4 5 6 7 8 9 10 11 12 13 14 15 16 17 18 19 20 21 22 23 24 25 26 27 28 29 30 31

2005年日历

	1	2	3	4	5	6	7	8
9	10	11	12	13	14	15		
16	17	18	19	20	21	22		
23	24	25	26	27	28	29		
30	31							

2005年7月

今__是 2005__7__10__, 是小高的生日。
(Today is 7-10-2005, Xiao Gao's birthday.)

问题:

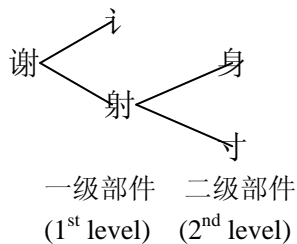
你的生日呢? (When is your birthday?)

三. 合体汉字的部件拆分。(Analysis of the components of compact characters)

汉字分独体字和合体字两种。合体字一般由两个或两个以上的部件组成。部件在组合成汉字时有一定的层次, 不一定多个部件都在同一个层面。按照组合成汉字时层面的不同, 部件可以分别被称作“一级部件”、“二级部件”……等。

(There are two types of characters: simple characters and compact characters. Compact characters usually is assembled by two or more parts. There are different levels/layers in assembling characters, not all parts are in the same layer. Depending on the difference in layering, the parts can be distinguished by 1st level, 2nd level part, etc.)

如“谢”字的部件拆分: (An example of the breakdown of the word “谢”)



问题:

请拆分汉字“多”、“们”、“明”、“因”、“识”。

(Please analyze the above characters)

四. 汉字的笔画。(Character Strokes)

笔画是汉字书写的基本单位。最基本的笔画包括:

(The stroke the fundamental unit of Characters. The most basic ones include:)

1. 横 heng (一)
2. 竖 shu (丨)
3. 撇 pie (丿)
4. 捺 na (㇇)

5. 点 dian (丶)

问题:

请给下边两个汉字加上一个笔画,变成新的汉字,把汉字写在横线上,把拼音写在括号里。(Please add a stroke to the following characters to create a new character and write them on the blank line, including the Pinyin in the parentheses.)

大 → _____ () 了 → _____ ()
日 → _____ () 口 → _____ ()

五. 请找出下列汉字的部首,写在括号中。(Please write the radical of the following characters in the respective parentheses)

1. 饭 ()
2. 可 ()
3. 样 ()
4. 刻 ()
5. 钟 ()
6. 星 ()
7. 因 ()
8. 认 ()

***每课一个部首。(One radical for each lesson.)**

月: (moon)



“月”是一弯新月的象形。因为月亮的由缺变圆有一定的规律,所以以“月”作部首的字多与时间或周期有关。如“期”:

(“月” is in the shape of a sickle-shaped moon. Because there is a set pattern to the change in the shape of the moon from sickle to round, words with “月” as radicals usually has some association with time period, as in “期”.)

(形声字) 期 = (声旁) 其 + (部首) 月

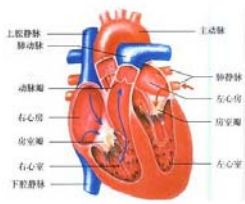
(Phonetic Characters) 期 = (Phonetic Component) 其 + (Radical) 月

其实,部首“夕”是“月”的变形,摹写暮色中月亮半见的样子。

(Actually, the radical “夕” is a transformation of the radical “月”.)

***部首的变形:“心”和“忄”。(The transformation of radicals)**

心、忄: (heart)



“心”作部首时可以在汉字的下边，也可以在汉字的左边。在下边时一般写作“心”，如“怎”；在左边时一般写作“忄”，如“忙”。这种变形是为了部件之间组合位置的和谐。

(“心” as a radical can be written below the character or on the left side. When written below it is usually written as “心”, for example in “怎”; when written in the left side it is usually written as “忄”, such as in “忙”)

想一想：学过的汉字中，有哪些字以“心”作为部首？哪些写作“心”？哪些写作“忄”？(Think back to the characters you have learned, which words have the “心” radical? Of those, which are written as “心” and which are written as “忄”?)